

CAST IRON BALL VALVE PN 16 WITH ISO MOUNTING PAD



SINCERT



Size : DN 40 to DN 150
Ends : ISO PN 10/16 Flanges
Min Temperature : -10°C
Max Temperature : + 100°C
Max Pressure : 16 Bars
Specifications : Full bore
Chromed brass ball
ISO 5211 mounting pad

Materials : Cast iron body

CAST IRON BALL VALVE PN 16 WITH ISO MOUNTING PAD

SPECIFICATIONS :

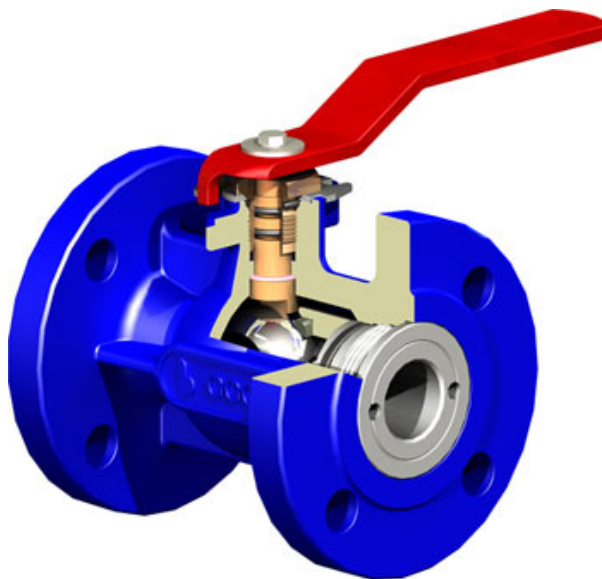
- Full bore
- Anti blow-out stem
- With O ring on stem
- ISO 5211 mounting pad
- ISO PN10/16 Flanges R.F.
- Chromed brass ball
- Painting color RAL 5002 , 200 microns thickness

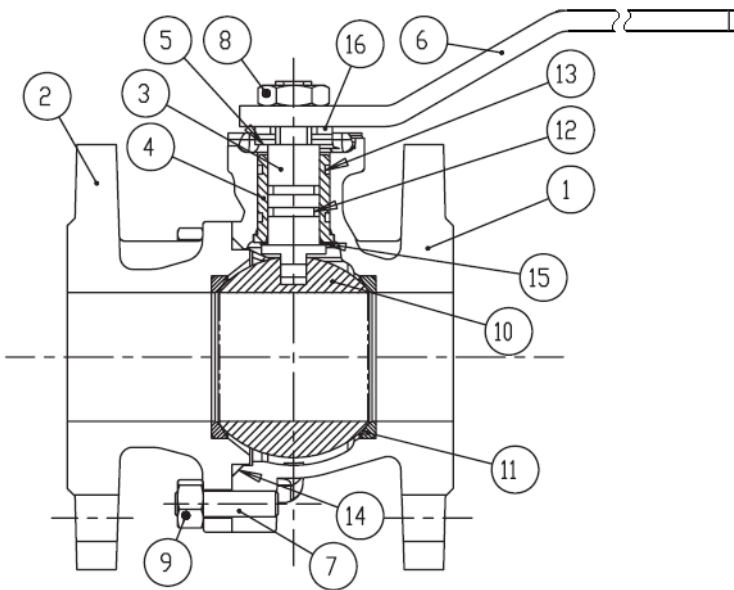
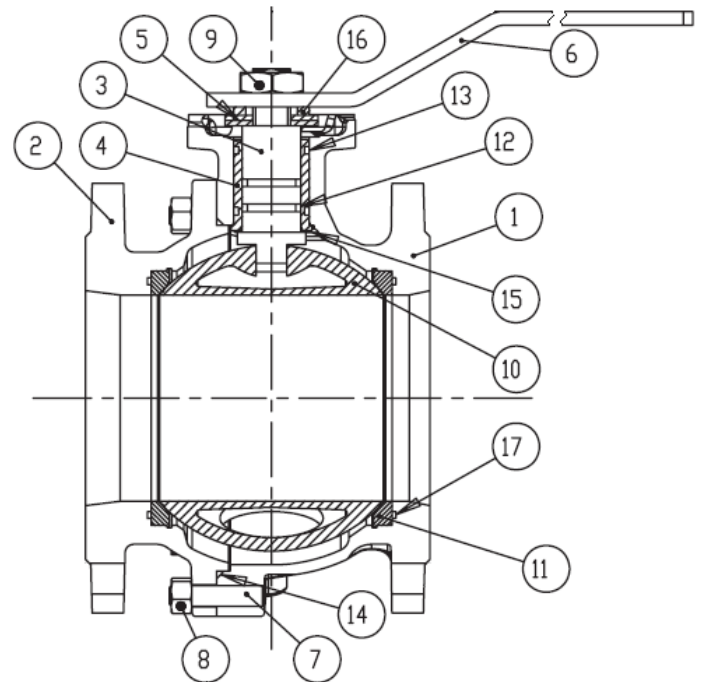
USE :

- For all common fluids
- Min and max Temperature Ts : - 10°C to + 100°C
- Max Pressure PN : 16 bars
- **Do not use with steam**
- **Do not use with compressed air**

RANGE :

- Cast iron ISO PN10/16 flanged R.F. with brass ball **Ref. 500** DN 40 to DN 150

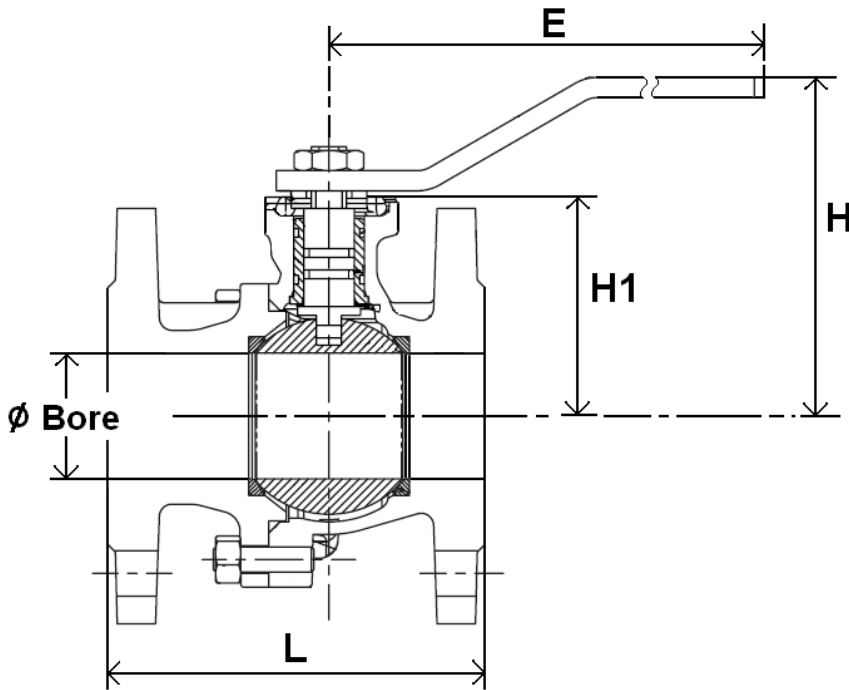


CAST IRON BALL VALVE PN 16 WITH ISO MOUNTING PAD
MATERIALS :
DN 40 – 100

DN 125 - 150


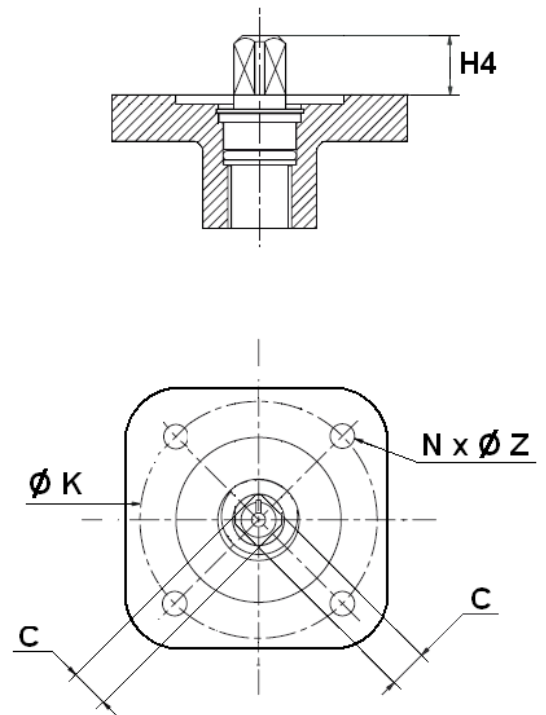
Item	Designation	Materials
1	Body	Cast iron EN GJS-400-15
2	End	Cast iron EN GJS-400-15
3	Stem	Brass
4	Ring	Brass
5	Washer	Fe 360 Zn
6	Handle	Fe 360 Zn
7	Bolt	C40 Zn
8	Nut	C40 Zn
9	Nut	C40 Zn
10	Ball	Chromed brass CW 617N according to EN 12165
11	Seat	PTFE + Carbon
12	Stem O ring	NBR
13	O ring	NBR
14	Body O ring	NBR
15	Thrust washer	PTFE
16	Ring	C40 Zn
17	Gasket (DN 125-150)	NBR

CAST IRON BALL VALVE PN 16 WITH ISO MOUNTING PAD

SIZE (in mm) :



Stem and iso mounting pad size :



REF.	DN	40	50	65	80	100	125	150
500	Ø Bore	40	50	61	74	95	120	145
	L	136	142	154	160	172	186	200
	H	125	135	143	165	180	225	243
	H1	78.5	87	95	118	132.5	165	182.5
	E	230	230	230	280	360	450	560
	Ø K	50	50	50	70	70	102	102
	Iso	F05	F05	F05	F07	F07	F10	F10
	N x Ø Z	4 x 7	4 x 7	4 x 7	4 x 9	4 x 9	4 x 11	4 x 11
	C	14	14	14	17	17	22	22
	H4	20	20	20	21.5	21.5	26.5	26.5
	Weight (Kg)	7.5	9	10.5	15.5	18.5	28	38.5

CAST IRON BALL VALVE PN 16 WITH ISO MOUNTING PAD

TORQUE VALUES (in Nm without safety coefficient) :

DN	40	50	65	80	100	125	150
Torque (Nm)	18	20	40	70	100	180	250

STANDARDS :

- Fabrication according to ISO 9001 : 2008
- DIRECTIVE 97/23/CE : Concerned by article 3, § 3
- ISO 5211 mounting pad
- Length according to NF 29323
- ISO PN10/16 Flanges R.F. according to EN 1092-2

ADVICE : Our opinion and our advice are not guaranteed and SFERACO shall not be liable for the consequences of damages. The customer must check the right choice of the products with the real service conditions.

CAST IRON BALL VALVE PN 16 WITH ISO MOUNTING PAD

INSTALLATION INSTRUCTIONS

GENERAL GUIDELINES :

- Ensure that the valves to be used are appropriate for the conditions of the installation (type of fluid, pressure and temperature).
- Be sure to have enough valves to be able to isolate the sections of piping as well as the appropriate equipment for maintenance and repair.
- Ensure that the valves to be installed are of correct strength to be able to support the capacity of their usage.
- **Installation of all circuits should ensure that their function can be automatically tested on a regular basis (at least two times a year).**

INSTALLATION INSTRUCTIONS :

- **Before installing the valves, clean and remove any objects from the pipes** (in particular bits of sealing and metal) which could obstruct and block the valves.
- **Ensure that both connecting pipes either side of the valve (upstream and downstream) are aligned (if they're not, the valves may not work correctly).**
- **Make sure that the two sections of the pipe (upstream and downstream) match, the valve unit will not absorb any gaps. Any distortions in the pipes may affect the tightness of the connection, the working of the valve and can even cause a rupture.** To be sure, place the kit in position to ensure the assembling will work.
- **If sections of piping do not have their final support in place, they should be temporarily fixed. This is to avoid unnecessary strain on the valve.**
- Tighten the bolts in cross.
- It's recommended to operate the valve (open and close) 1 to 2 times per year