

# BOURDON TUBE PRESSURE GAUGES CASE STAINLESS STEEL



DRUCK & TEMPERATUR

**Nominal case size 63**

**Connection brass**

**Connection position bottom or back**

Bourdon tube pressure gauge with brass connection in a robust crimp ring stainless steel housing, optionally in a bayonet housing; Suitable for gaseous and liquid, not highly viscous and non-crystallizing media that do not attack copper alloys.



Type	4310	4360	4365	Options
Nominal case size	63			
Symbol				Safety case
Accuracy acc. To DIN EN 837-1	Class 1,6; class 2,5 at 0/600 bar			Class 1,0
Measuring ranges	0/0,6 up to 0/600 bar			Other on request
Case	Crimped-on ring case 1.4301, with blow out			Bayonet case 1.4301
Case filling	without			Fillable, glycerine filling, silicone oil filling
Wetted parts	Bourdon tube made of bronze			Bourdon tube 316L (1.4404)
Connection material	Brass			316L (1.4404)
Connection	G 1/4 B			M12x1,5, 1/4"NPT, others on request
Connection position	bottom	centric back	excentric back	Other on request
Window	Instrument glass			Safety glass or Polycarbonate
Movement	Brass / German silver			Stainless steel
Dial	Aluminium white, lettering / scale black			Special scale
Pointer	Aluminium black			
Case protection type	IP54; filled devices with closed blow-out IP 65			
Mounting				Back flange or surface mounting, Front flange, U-clamp for panel mounting (only version with crimped-on ring)
More options				Oxygen use, oil- and grease free, orifice

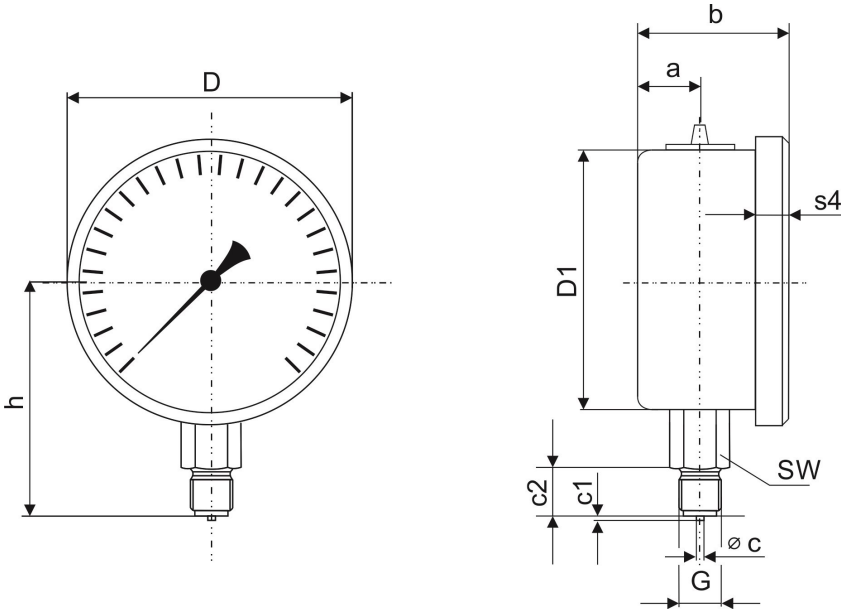
**Type 4310, 4360, 4365**

Crimped-on ring version

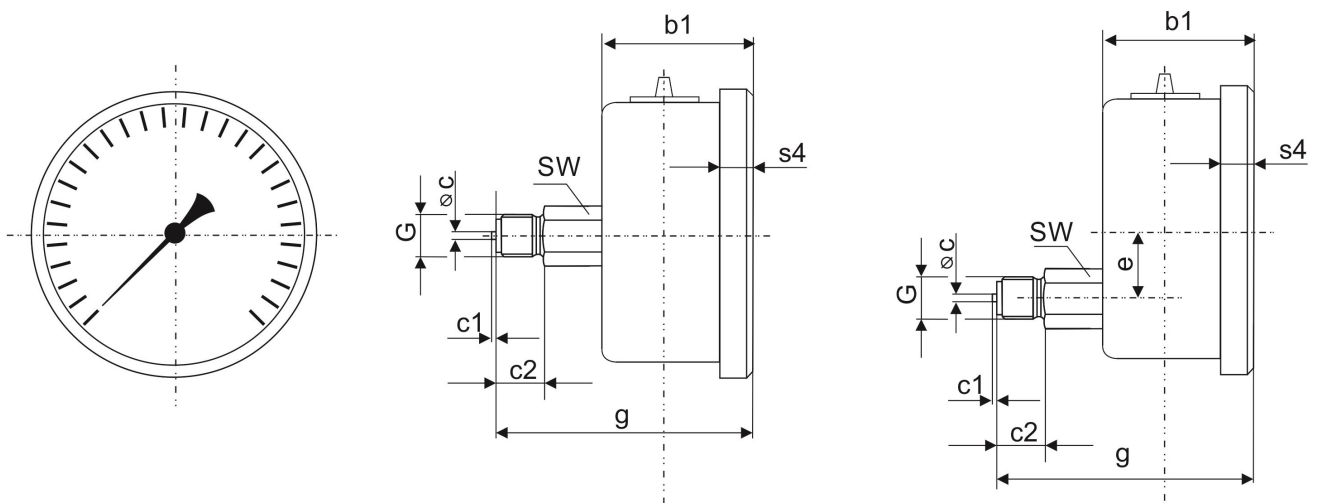
Dimensional drawings

Dimensions in mm

Type 4310



Types 4360 and 4365



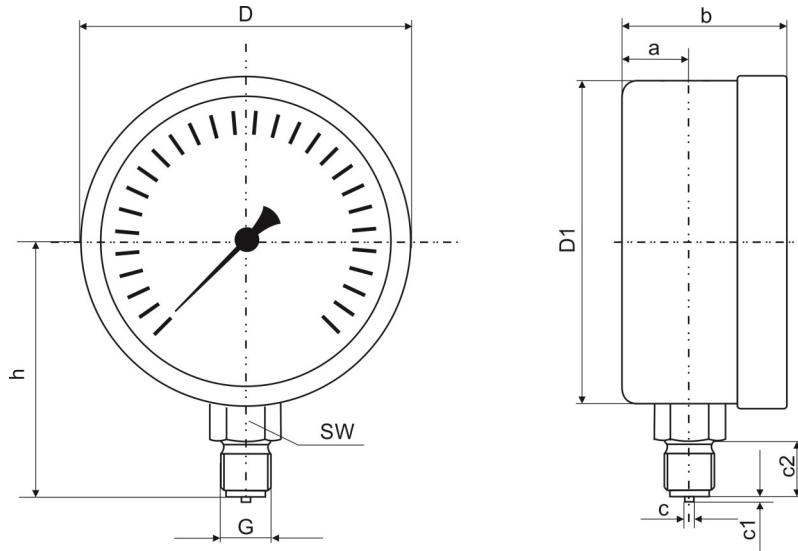
Type	NG	D	D1	h	a	b	b1	c	c1	c2	e	g	s4	G	SW	Weight without filling	Weight with filling
4310	63	67	62	54	10	34	38	5	2	13	-	-	9,5	G¼	14	approx. 0,18 kg	approx. 0,25 kg
4360	63	67	62	-	-	-	-	5	2	13	-	61	9,5	G¼	14	approx. 0,18 kg	approx. 0,25 kg
4365	63	67	62	-	-	-	-	5	2	13	18	61	9,5	G¼	14	approx. 0,18 kg	approx. 0,25 kg

Version with bayonet ring case

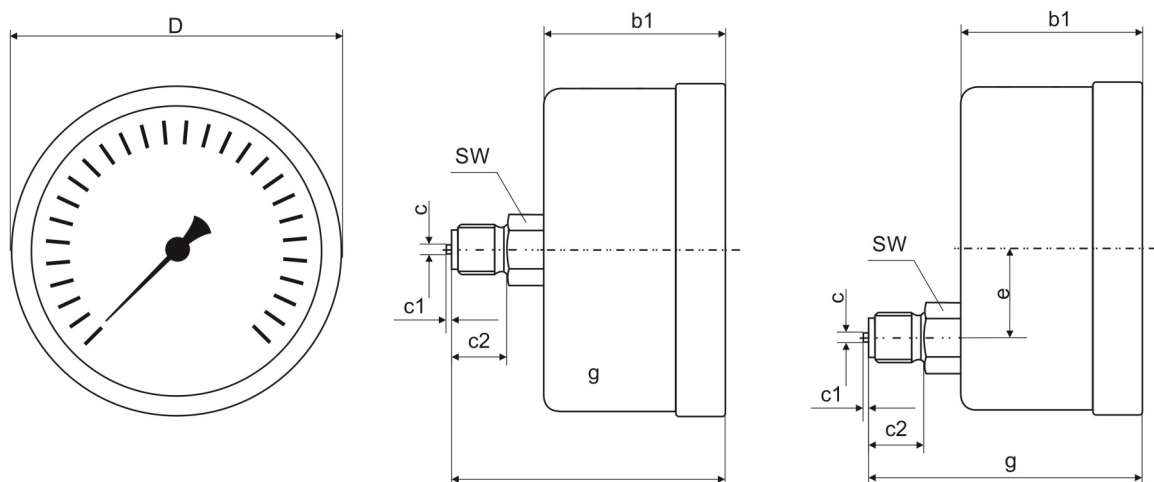
Dimensional drawings

Dimensions in mm

Type 4310



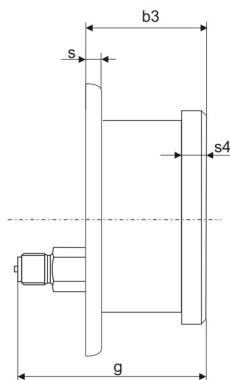
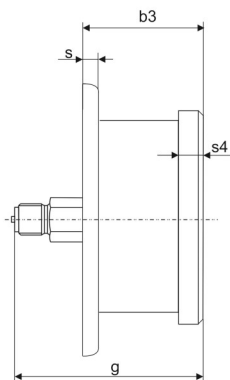
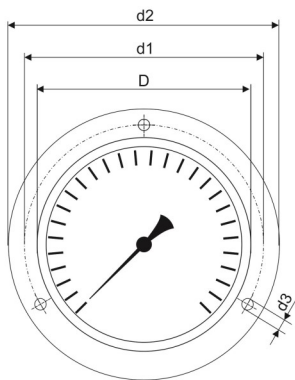
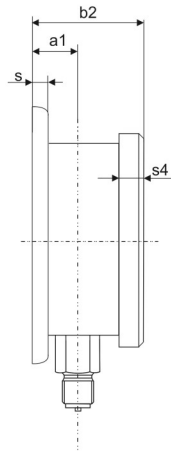
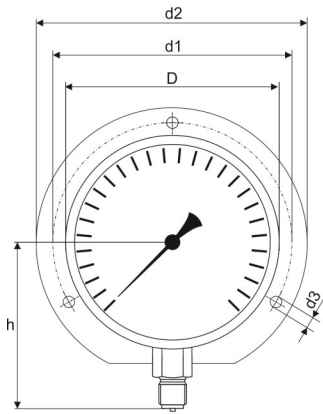
Types 4360 and 4365



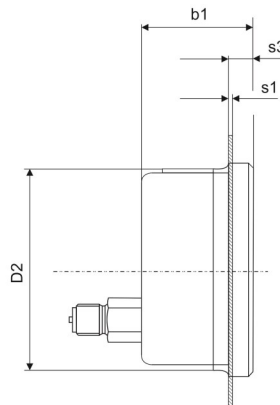
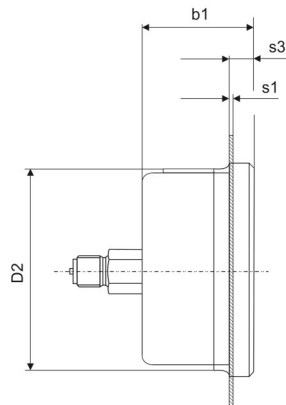
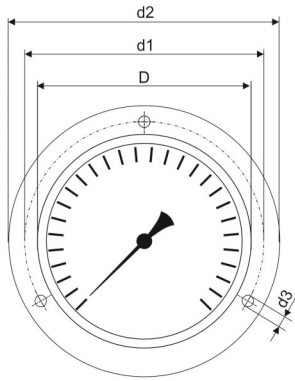
Type	NG	D	D1	h	a	b	b1	c	c1	c2	e	g	G	SW	Weight without filling	Weight with filling
4310	63	64	62	54	10	33	37	5	2	13	-	-	G $\frac{1}{4}$	14	approx. 0,18 kg	approx. 0,25 kg
4360	63	64	62	-	-	-	-	5	2	13	-	59	G $\frac{1}{4}$	14	approx. 0,18 kg	approx. 0,25 kg
4365	63	64	62	-	-	-	-	5	2	13	18	59	G $\frac{1}{4}$	14	approx. 0,18 kg	approx. 0,25 kg

**Mounting—Crimped-on ring version**  
**Dimensional drawings** Dimensions in mm

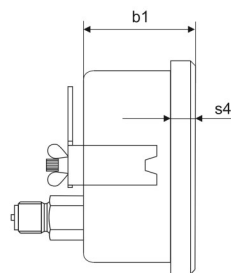
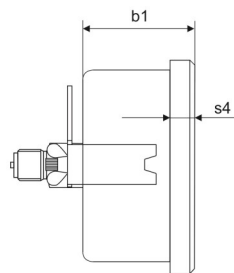
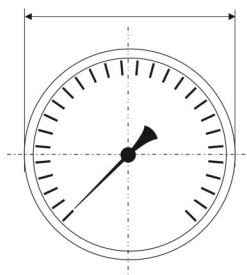
Back flange



Front flange



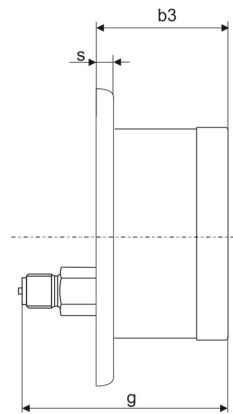
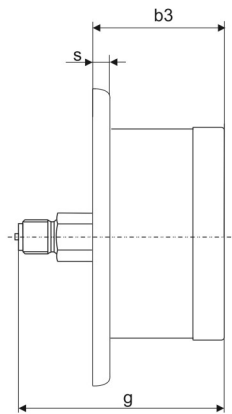
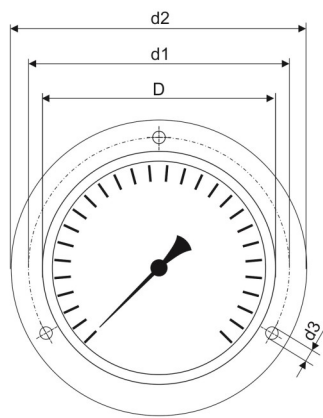
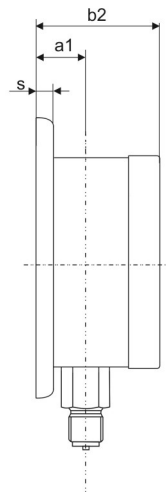
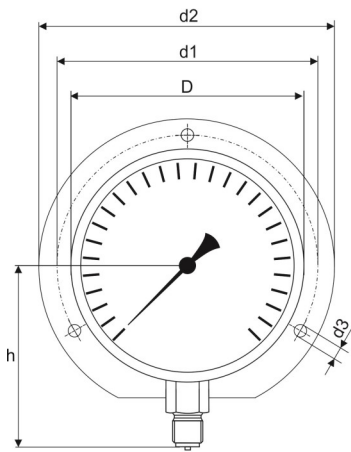
U-clamp for panel mounting



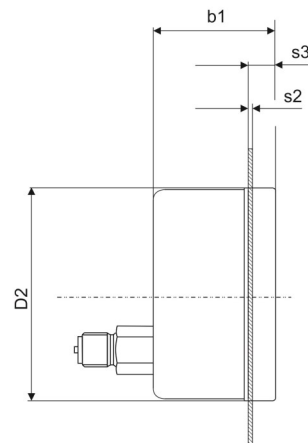
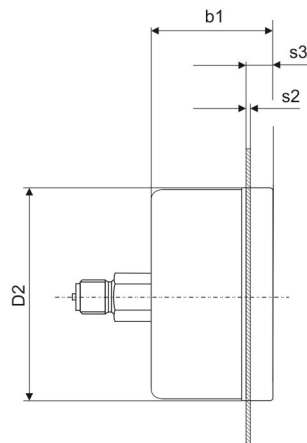
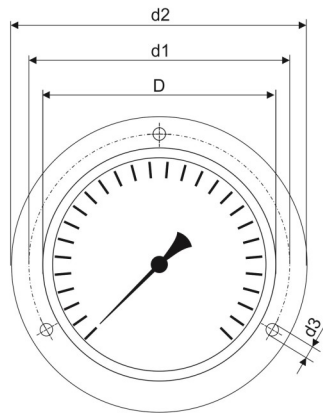
NG	D	D2	d1	d2	d3	a1	b1	b3	s	s1	s3	s4
63	67	64	75	85	3,6	13	38	41	5	1	10,5	9,5

**Mounting—bayonet case version**  
**Dimensional drawings** Dimensions in mm

**Back flange**



**Front flange**



NG	D	D2	d1	d2	d3	a1	b1	b3	s	s2	s3
63	64	66	75	85	3,6	13	37	40	5	2	5,5